

Australian Centre for Entrepreneurship Research Exchange (ACERE) 2024



Sydney, 5-8 February 2024
The University of Technology Sydney

Entrepreneurship in an Age of Complexity and Societal Change



Office of the
Chief Scientist
& Engineer





Acknowledgement of Country

UTS acknowledges the Gadigal people of the Eora Nation, the Boorooberongal people of the Dharug Nation, the Bidiagal people and the Gamaygal people, upon whose ancestral lands our university stands. We would also like to pay respect to the Elders both past and present, acknowledging them as the traditional custodians of knowledge for these lands.

Key Dates and Locations

Monday, 5th February 2024

Doctoral Consortium, UTS Business (Building 8, Level 8)

Doctoral Consortium Social, The Glebe Hotel, 63 Bay St, Glebe

Tuesday, 6th February 2024

Industry-Educator Forum, Aerial Function Centre (Building 10, Level 7)

Paper Development Workshops (PDWs), Aerial Function Centre (Building 10, Level 7)

Main Conference Welcome Address, Aerial Function Centre (Building 10, Level 7)

Welcome Social, The Old Clare Hotel, 20 Broadway (rooftop)

Wednesday, 7th February 2024

Main Conference, Aerial Function Centre (Building 10, Level 7)

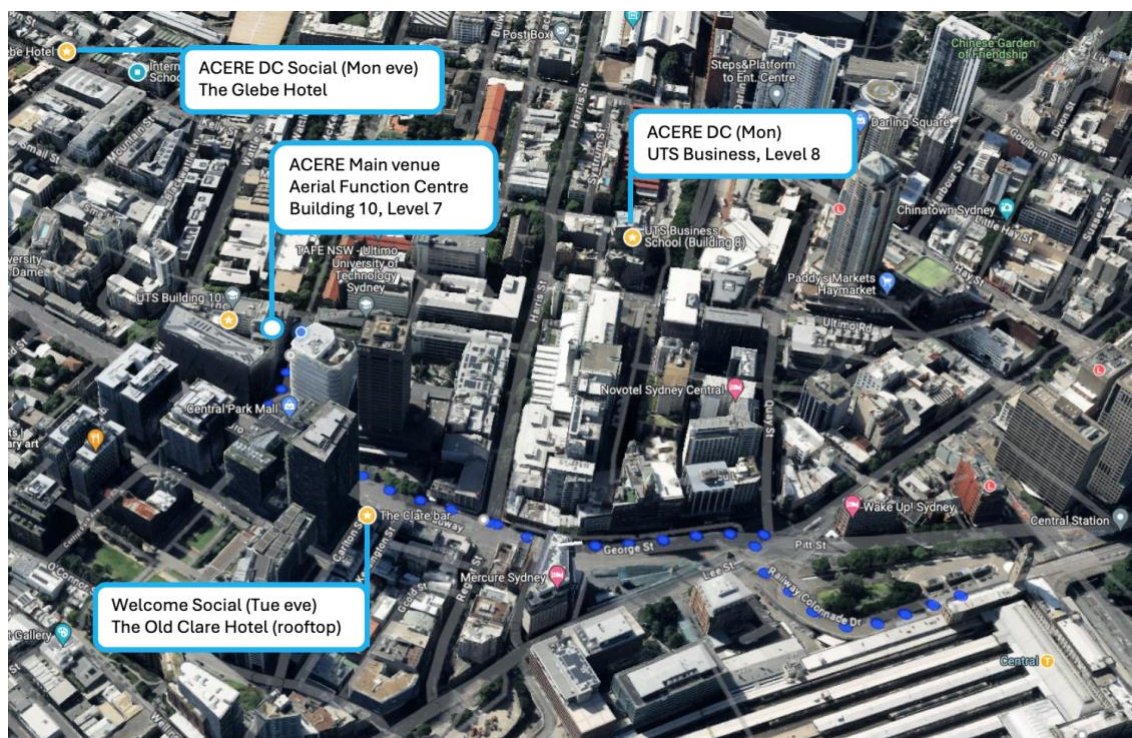
Gala Event, Museum of Contemporary Art, Circular Quay (Loti Smorgon Sculpture Terrace)

Thursday, 8th February 2024

Main Conference, Aerial Function Centre (Building 10, Level 7)

Closing Drinks, Aerial Function Centre (Building 10, Level 7, balcony)

Conference venues at UTS and surrounds



Gala event venue

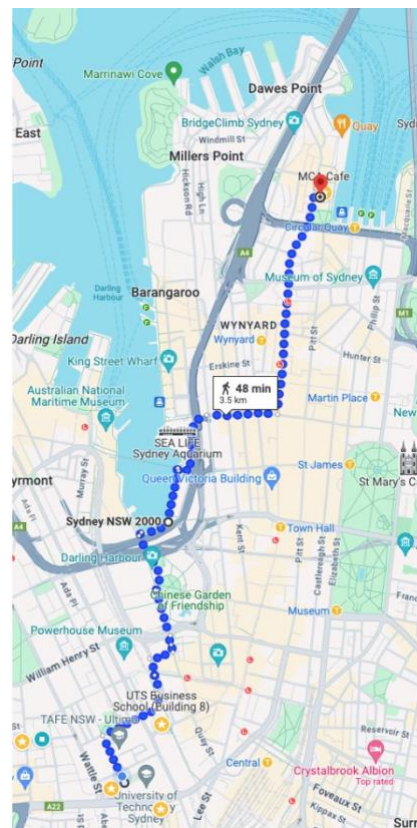
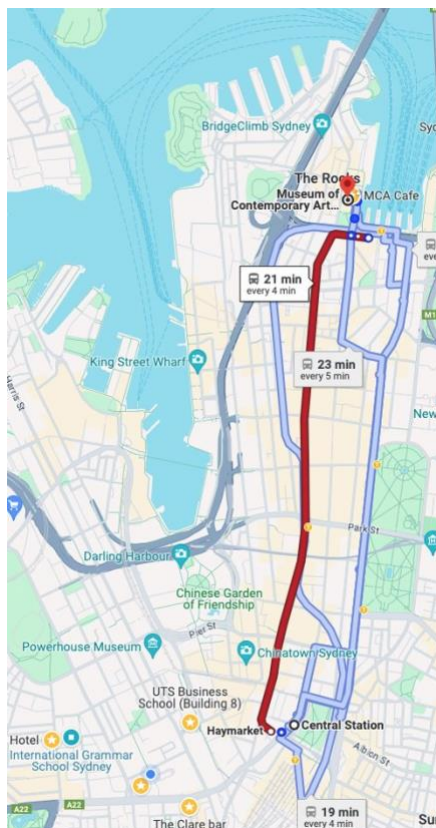
Museum of Contemporary Art (MCA) Sculpture Terrace

[Museum of Contemporary Art Australia](#) - 140 George St, The Rocks NSW 2000



Getting from UTS to Gala Event at Museum of Contemporary Art (MCA)

20-25 minutes by tram or train from Central Station to Circular Station, or 1hr scenic walk via Darling Harbour



Public Transport and Parking

Getting to the University of Technology Sydney campus

The closest station is Central Station (it takes about 15 minutes to walk to Building 10 from the Central Station platforms).

Transport NSW runs frequent buses, trains and trams between Central Station and other popular destinations. Contactless payments are possible using several options, including American Express, Mastercard and Visa or debit cards. This includes physical cards and cards associated with your digital wallet (<https://transportnsw.info/tickets-opal/opal/contactless-payments>).

There are also bus stops located close to Building 10 on both sides of Broadway.

- Access [UTS campus maps](#).
- Use [trip planner](#) to get around Sydney using public transport.

Travel from the airport

Sydney Airport is located 8km from the Sydney CBD (approx. 20 mins by road or 10 mins by train). Travel on the [Airport Link train to Central Station](#) from the Domestic or International terminals (one way) will cost \$18.70.

A taxi to the CBD will cost between \$50-\$60 AUD.

Parking

There is limited, metered on-street parking on Thomas Street (adjacent to Building 10). A number of parking stations operate in the area, including Interpark which is located in the basement of Building 10 (entrance via Thomas St). Parking station rates vary but average at about \$30 for a whole day. Overall we recommend taking public transport when possible.

The UTS City campus is within walking distance from Central Station. If you plan to drive, there are limited options for privately run parking stations close to campus (<https://maps.uts.edu.au/directions.cfm>).

Getting to and from the Gala Event

The Gala Event will be at the Museum of Contemporary Art (MCA) at Circular Quay, overlooking the iconic Sydney Opera House. Popular options to get there include walking (40-60 minutes), e-Bike/Bike (10-15 minutes), train or tram (10-25 minutes). Please visit the Transport NSW Trip Planner for timetable and ticketing information (<https://transportnsw.info/trip>).

All venues and train stations have lifts and are accessible.

Co-Chair's Welcome

Welcome to the 2024 Australian Centre for Entrepreneurship Research Exchange Conference. We're delighted to be hosting the 20th annual ACERE Conference. The enduring legacy of the conference owes its success to pioneers in entrepreneurship research, especially Emeritus Professor Murray Gillin AM and Professor Per Davidsson, who provided a stable home for ACERE at SUT and QUT, respectively, for many years.

In recent years, we have seen a shift in entrepreneurship research and teaching from a focus at the founder or firm level to one that recognises the complexity of the environment in which we exist. The complexity and dynamic of the environment are clearly brought to light by societal and global challenges (and opportunities!) relating to climate change, pandemics, wealth disparity, generative AI, and various conflicts. Hence, the conference theme for 2024: "Entrepreneurship in an Age of Complexity and Societal Change".

This year's theme is brought to life with an amazing line-up of diverse keynotes and panels, tackling wicked problems like impact research (feat. Prof. Sophie Bacq), generative AI (feat. Prof. Matt Grimes), international entrepreneurship (feat. Prof. Ajai Gaur), societal change (feat. Prof. Danielle Logue, Prof. Karl Wennberg, A/Prof. Marilyn Uy), through to broader discussions about complexity, transdisciplinarity and multi-level phenomena (feat. Prof. Per Davidsson, Prof. Moren Lévesque, Prof. Lorraine Uhlaner).

Another trend we're keenly aware of this year is research impact and knowledge exchange. We introduced the Educator's Forum for ACERE 2019 and haven't looked back. This year, the Industry & Educator's Forum is provided in active collaboration with Investment NSW, coinciding with the launch of a new report on the impact of coworking spaces, accelerators, incubators and startup hubs by the NSW Innovation & Productivity Council. The report echoes the central role of entrepreneurial universities in workforce development, research commercialisation, and partnering with such organisations for program development and providing convening spaces to explore entrepreneurial opportunities.

We're proud of the momentum and reputation that ACERE has maintained, as evidenced by the high-quality keynotes, journal editors and over half the conference registrations from overseas delegates. After Australia, the next most common countries of residence are Germany, New Zealand, Japan, the United Kingdom, and France.

Running ACERE (without a Karen Taylor) is a tremendous undertaking. We could not have done it without author's contributions, reviewers, academic committee members, organising committees for the DC, PDW, EF/IF and main conference, plus various professional staff and HDRs who are volunteering some of their time to make it an amazing experience. Special thanks to our sponsors, including QUT, UTS' DVC Enterprise, TD School and Business School, Investment NSW and NSW Office of Chief Scientist & Engineer.

Welcome to the 20th anniversary of ACERE in an iconic location. We trust that the reshaped program will enable you to explore Sydney and surrounding areas and new collaborations to address today's complex challenges.

Jarrod Ormiston, Martin Bliemel, Rui Torres de Oliveira (Conference Co-Chairs)

Sponsors

Conference sponsors

We would like to thank the major sponsors of the conference.



The Office of the NSW Chief Scientist & Engineer (OCSE) provides independent, evidence-based advice to government on how to address difficult policy problems. OCSE provides funding to the NSW research sector and brings academia, government and industry together to drive the commercialisation of research excellence for the benefit of the state, with a major focus on industry development. OCSE also supports a number of science outreach and engagement activities and events, including the annual Premier's Prizes for Science & Engineering.

Best paper award sponsors

We would like to thank the sponsors for the best paper awards.

- Best Overall Paper (Sponsored by Swinburne University of Technology)
- Best Qualitative Paper (Sponsored by the University of Queensland)
- Best Quantitative Paper (Sponsored by the University of Adelaide)
- Best Paper by an Early Career Researcher (Sponsored by Macquarie University)
- Best Paper by a PhD Candidate (Sponsored by Queensland University of Technology)
- Best Paper using transdisciplinary methods (Sponsored by UTS: TD School)
- Best Paper for innovation in addressing social challenges (Sponsored by UTS: Business)

Local Organising Committee

Jarrod Ormiston (Co-Chair)
University of Technology Sydney

Martin Bliemel (Co-Chair)
University of Technology Sydney

Mariana Gonzalez Lago (IF/EF Co-chair)
University of Technology Sydney

Tshintina Morris
University of Technology Sydney

Rene Brauer
University of Technology Sydney

Merryn Emslie
University of Technology Sydney

Michelle Holiday
University of Technology Sydney

Paulina Sepulveda Martinez
University of Technology Sydney

Dilek Centindamar Kozanoglu (IF/EF Co-chair)
University of Technology Sydney

Jan Henrik Gruenhagen (DC/PDW Co-chair)
University of Technology Sydney

Jochen Schweitzer (DC/IF/EF Co-chair)
University of Technology Sydney

Saskia de Klerk
University of the Sunshine Coast

Deepa Subhadrammal
University of Technology Sydney

Trisna Mulyati
University of Technology Sydney

Pauline Futeran
University of Technology Sydney

QUT Organising Committee

Rui Torres de Oliveira (Co-Chair)
Australian Centre for Entrepreneurship
Research, QUT

Mehrzaad Saeedikiya
Australian Centre for Entrepreneurship Research,
QUT

Conference Academic Committee

Alex Maritz

Latrobe University

Allan O'Connor

The University of South Australia

Anna Jenkins

UQ Business School

Anna Krzeminska

Macquarie University

Andreas Raunch

Audencia Business School

Dean Shepherd

University of Notre Dame

Dilek Centindamar Kozanoglu

University of Technology Sydney

Erik Lundmark

Macquarie University

Evan Douglas

Queensland University of Technology

Frederik Von Briel

The University of Queensland

Joao Ferreira

The University of Beira Interior (UBI)

Jose Aurelio Medina Garrido

University of Cadiz

Justin Craig

Bond University

Kim Klyer

The University of Southern Denmark

Marilyn Uy

Nanyang Technological University

Martie-Louise Verreyne

The University of Queensland

Martin Obschonka

University of Amsterdam

Mile Terziovski

Swinburne University of Technology

Morgan Miles

The University of Queensland

Noel Lindsay

The University of Adelaide

Paul Spee

The University of Queensland

Paul Steffens

The University of Adelaide

Per Davidsson

Queensland University of Technology

Pia Arenius

Emlyon Business School

Rui Torres de Oliveira

Australian Centre for Entrepreneurship Research,
QUT

Sarah Cooper

The University of Edinburgh

Scott Gordon

The University of Adelaide

Shane Matthews

Queensland University of Technology

Registration and help

Registration Desk Location and Times

The conference registration desk will be just inside the main doors of the Aerial Function Centre, on level 7 of Building 10. The most direct route to Aerial is via the bank of elevators via the doorway just opposite the shipping container housing the [Green Genie](#), which uses algae to capture atmospheric carbon dioxide.

Delegates for the main conference can check in from 3:00 pm on Tuesday 6th February onwards. On Wednesday and Thursday, the registration desk will open at 08:30 am. The desk will remain open until 5:00 pm daily until Thursday.

Conference Emergency Contacts

Martin Bliemel

e: Martin.Bliemel@uts.edu.au

o: 02 9514 4119 (connects to personal mobile)

Jarrold Ormiston

e: Jarrod.Ormiston@uts.edu.au

m: 0422 652 335

Rui Torres de Oliveira

e: rui.torresdeoliveira@qut.edu.au

m: 0481 125 770

Mehrzad Saeedikiya (ex ordo specialist)

e: mehrzad.saeedikiya@hdr.qut.edu.au

m: 0478 778 559

Dylan Heaslip (TD School A/V support)

e: Dylan.Heaslip@uts.edu.au

Mariana Gonzalez Lago (TD School general support)

e: Mariana.GonzalezLago@uts.edu.au

Wifi

We encourage the use of the Eduroam network. Please first log in to eduroam at your home university before roaming at UTS. Aerial Function Centre also provides complimentary conference wifi, with details available on site.

Mobile devices

Silent or vibrate mode only please.

Keynote speakers

Professor Sophie Bacq

IMD

Sophie Bacq is Professor of Social Entrepreneurship. She is a globally recognized thought leader on social entrepreneurship. She investigates and theorizes about entrepreneurial action aiming to solve intractable social and environmental problems, at the individual, organizational, and civic levels of analysis. Her recent work has focused on how to strengthen communities through collective action and entrepreneurship, and she is the co-



author of a forthcoming book on creating civic wealth, which explains how diverse coalitions of citizens are joining forces to create civic wealth and enable communities to thrive and grow.

Bacq has taught and conducted empirical research on social entrepreneurship in Europe, the United States and South Africa since 2006, and has been invited as a keynote speaker at conferences around the world, including the International Social Innovation Research Conference (ISIRC), the European University Network on Entrepreneurship (ESU), and the Canadian Council for Small Business and Entrepreneurship.

Her research on social entrepreneurship, societal impact, organizational social performance, and civic wealth has been published in top-tier management and entrepreneurship journals, including *Academy of Management Annals*, *Academy of Management Discoveries*, *Academy of Management Perspectives*, *Academy of Management Review*, *Academy of Management Learning & Education*, *California Management Review*, *Entrepreneurship: Theory & Practice*, *Journal of Business Venturing*, and *Journal of Management Studies*. She has published research in both English and French, and is the author of several book chapters and co-editor of several books on social entrepreneurship. Her scholarship has been recognized with numerous awards, including the *Journal of Management Studies* 2022 Best Paper Award for her theory of value creation, appropriation, and distribution, and the *Academy of Management Perspectives* 2020 Best Article Award for her paper on civic wealth creation and stakeholder engagement.

Bacq serves as a Field Editor for the *Journal of Business Venturing*, is a member of the editorial review boards of the *Academy of Management Journal*, *Entrepreneurship: Theory & Practice*, and *Journal of Management*, and has guest edited several special issues for the *Journal of Management Studies*, *California Management Review*, and the *International Journal of Management Reviews*.

She is also Co-Director of [The Annual Social Entrepreneurship Conference](#), one of the top academic gatherings on the topic, and the Lead Faculty of the award-winning [Social Entrepreneurship Doctoral Seminar](#).

Before joining IMD in 2023, Bacq was the Larry and Barbara Sharpf Associate Professor of Entrepreneurship at Indiana University Kelley School of Business, Assistant Professor of Entrepreneurship & Innovation at Northeastern University D'Amore-McKim School of Business in Boston, and a Visiting Scholar at New York University Stern School of Business. A native of Belgium, she received her doctorate from the Université catholique de Louvain.

Professor Matthew Grimes

Judge Business School, University of Cambridge

Professor Matthew Grimes is Professor of Entrepreneurship and Sustainable Futures at the Judge Business School.

Matthew's research interests include entrepreneurship and sustainable development. He examines how individuals and organisations create, introduce, and sustain positive social change by way of entrepreneurship by studying both the contextual and individual factors that contribute to innovation and the governance of innovation.



He is a member of the Organisational Theory and Information Systems subject group at Cambridge Judge Business School, Academic Co-Director of the Cambridge Judge Entrepreneurship Centre, and current Associate Editor at the Academy of Management Journal. He also serves on the editorial review boards of Academy of Management Review and Journal of Business Venturing. He previously served on the editorial review boards for Administrative Science Quarterly, Entrepreneurship, Theory, & Practice and the Strategic Entrepreneurship Journal.

His research has been published in leading journals, including the Academy of Management Journal, Strategic Management Journal, Academy of Management Review, Journal of Business Venturing, and Entrepreneurship Theory and Practice.

Prior to obtaining his PhD, Professor Grimes was an Associate Director for Research at CEB (now Gartner) in Washington DC, London and New Delhi.

Professor Ajai Gaur

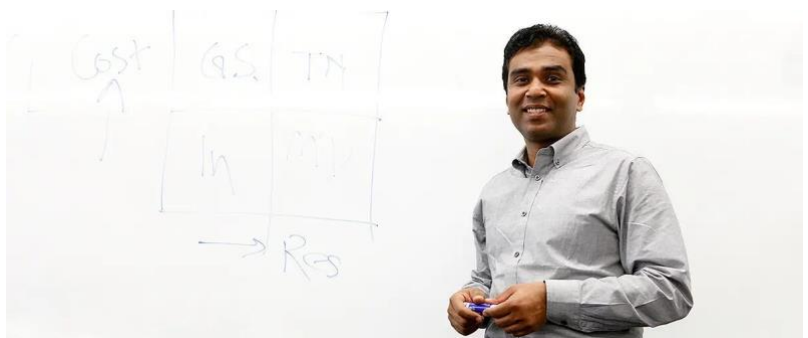
Rutgers Business School, Rutgers University

Ajai Gaur is Dean's Eminent Research Professor and Chair of the Department of Management and Global Business at Rutgers Business School - Newark and New Brunswick, at Rutgers University.

Ajai is working on understanding the strategic adaptation of emerging economy firms during institutional transition. He has also worked on issues related to the institutional

distance between different governance environments, MNCs' ownership strategies, staffing strategies and entry mode choice in international investments.

Empirically, he has examined firms based in Australia, China, Germany, India, Japan, New Zealand, South Korea, the UK and the USA. Some of his research has appeared in journals such as Strategic Management Journal, Journal of International Business Studies, Journal of Management, Journal of Management Studies, Journal of World Business and Organization Research Methods. Ajai served as the President of the Asia Academy of Management for two terms from 2015 to 2019. He is currently serving as the Editor-in-Chief of the Journal of World Business.



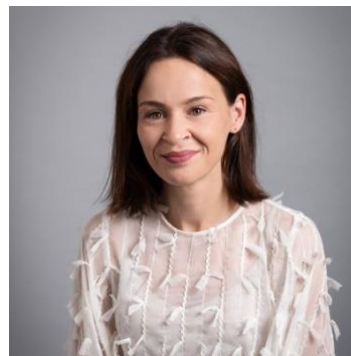
Katie Knight, Investment NSW

Katie Knight is the Deputy Secretary of Investment NSW. Katie is passionate about collaboration and effective stakeholder engagement to maximise outcomes and the growth of our future economy. As Investment NSW's Deputy Secretary, Katie is committed to delivering economic and social benefits for the people of NSW by growing our economy and making opportunities happen. In her previous role, she was the Executive Director of the Commercial Transactions team of the Department of Enterprise, Investment and Trade. This role involved working with the private sector to deliver innovative places, precincts and infrastructure, including the government's unsolicited proposals and direct dealing processes. Katie has practised as a corporate and transactional lawyer for over 20 years. Much of her career is focused in the health and life sciences sector, from acting for biotechnology and start-up companies with venture capital and angel investments, to commercialising technologies and capital raising for R&D companies and sophisticated market players.



Kate Russell, Supply Nation

Kate Russell is CEO of Supply Nation - a non-profit organisation that aims to grow the Aboriginal and Torres Strait Islander business sector by promoting supplier diversity in Australia. Kate is a proud Awabakal woman from Lake Macquarie, passionate about engaging Aboriginal and Torres Strait Islander people and communities to co-design programs and services using international best practices to make tangible policy changes. As a consultant, Kate has worked across multiple policy areas to support the delivery of outcomes and community benefits, focusing on people and culture programs. Before this, she held senior roles at the Department of Planning and Environment, overseeing the design and delivery of programs across a portfolio of agencies and over 15,000 staff. Kate has worked at the Department of Foreign Affairs and Trade in Sydney and Canberra and for the Catalan Department of Education in Spain. Currently, Kate is a Board Director at the Diversity Council Australia and has previously served as a Director for Yilabara Solutions and Interrelate. Kate holds a Bachelor of International Studies (Distinction), an MBA and an Executive Master of Public Administration.



Richard Kimber, Stone & Chalk

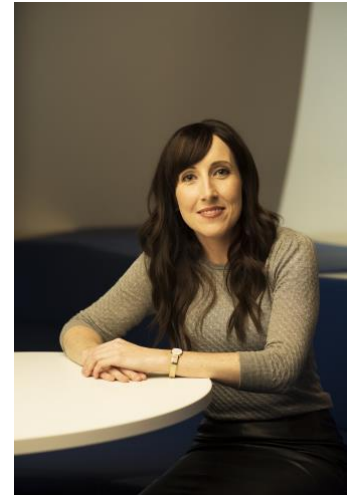
Richard Kimber is an international Financial Services and Technology CEO and experienced Board Director and Chair. He is currently a Non-Executive Director and Chair of the Technology & Transformation Committee at ING Bank Australia Ltd. He is Chairman of Stone & Chalk – the largest start-up and scale-up ecosystem in Australia, Chairman of AustCyber – a Federal Government industry growth centre, a member of the Innovation & Productivity Council for the NSW Government and a Non-Executive Director of Daisee; a pioneering AI software company he founded in 2017. Before this role, he was CEO of ASX-listed OFX Group, a leading international payment company. In 2006, he was appointed as the first Managing Director of Google in Southeast Asia. Prior, he was Chief Executive of firstdirect Bank in the UK, which followed several international roles with the HSBC Group. Richard has a Bachelor of Science (Psychology/Statistics) and an MBA from MGSM (1992).



Professor Danielle Logue

Centre for Social Impact, UNSW Business School, UNSW Sydney

Danielle Logue is Director of the Centre for Social Impact UNSW (CSI UNSW) and Professor of Innovation & Impact at UNSW Business School. Danielle's research portfolio draws on a broad base of organisation and management theory to examine how enterprises and markets engage in social innovation processes. Recent projects investigate new forms of organising, governing, and financing to address social and environmental problems, including impact investing, civic crowdfunding platforms, social stock exchanges, social impact bonds, and social enterprises. In recent years, Danielle has led major external research contracts for the Department of Foreign Affairs and Trade, the Department of Social Services, and the Wayside Chapel. She was awarded an ARC DECRA and is currently the Chief Investigator on an ARC Discovery Project examining impact investing markets and gender equality. Danielle's research has been published in journals such as the Academy of Management Journal, Strategic Management Journal, Academy of Management Annals, Organization Studies, and Human Relations, and her latest book is 'Theories of Social Innovation' (Edward Elgar).



Professor Karl Wennberg

Stockholm School of Economics

Karl Wennberg is the Barbara Bergström Chair in Educational Leadership and Excellence at the Stockholm School of Economics. His research is on the Economics of Education, Entrepreneurship and Organization Theory. His current research focuses on, among other things, organizational diversity, leadership and working environment in schools, and the 'turnaround' of poor-functioning to more well-functioning schools. Karl studies the theoretical, practical and policy implications of these streams of research and communicates this in articles, books, case studies and public policy papers. Karl has written over 100 peer-reviewed articles, books, book chapters, case studies and reports on the above or related topics. He has lectured in Europe, Asia, North America, and Australia and consulted for NGOs, governments, and private firms. Karl also heads the Center for Educational Leadership and Excellence.



Professor Moren Lévesque

Schulich School of Business, York University

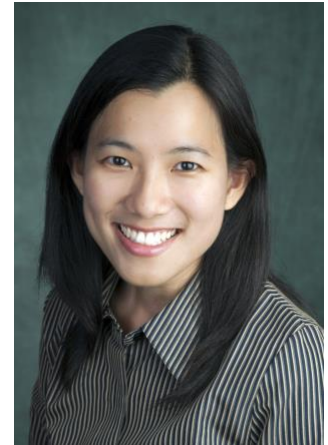
Moren Lévesque is Professor of Operations Management and Information Systems at Schulich School of Business, York University and CPA Ontario Chair in International Entrepreneurship. She received her PhD in Business Administration from the University of British Columbia. Her main area of research is entrepreneurial decision making. She sees individual action as a key to the success (or failure) of entrepreneurial activity. Thus, she views individuals' decision making as one of the most important aspects of developing an understanding of entrepreneurship. Her theory of entrepreneurship is built using mathematical models of decision making. Through her research, she tries to demonstrate how the strengths of a mathematical approach to theory development can offer a compelling argument for its use in organizational studies and, more specifically, entrepreneurship.



Associate Professor Marilyn A. Uy

Nanyang Business School, NTU Singapore

Marilyn Uy is a tenured Associate Professor of Entrepreneurship at the Nanyang Business School, Nanyang Technological University (NTU Singapore). She completed her PhD at the Leeds School of Business, University of Colorado at Boulder (USA). Her research spans the broad areas of the psychology of entrepreneurship, work motivation, and emotional well-being. She uses longitudinal approaches such as experience sampling method, weekly or daily diary method, and multi-wave surveys in conducting empirical research. Her articles have been published in premier journals including the Academy of Management Journal, Journal of Applied Psychology, Journal of Business Venturing, Entrepreneurship Theory and Practice, Human Relations, and Organizational Research Methods, among others. She has been appointed Editor (Associate Editor equivalent) of Entrepreneurship Theory and Practice and serves on the editorial review boards of the Journal of Business Venturing, Strategic Entrepreneurship Journal, Applied Psychology: An International Review, and Small Business Economics. Since joining NTU Singapore in 2011, she has attracted competitive research funding worth more than S\$3 million.



Professor Lorraine Uhlaner

Prague University of Economics and Business

Lorraine Uhlaner is Professor of Management at Prague University of Economics and Business. She received her PhD from the University of Michigan. She carries out research on privately held firms, including non-family SMEs and family businesses. Her research interests include the influence of corporate governance on innovation and financial performance in privately owned firms, the effect of culture and other institutional variables on commercial and social entrepreneurship activity, antecedents of corporate social responsibility and sustainable entrepreneurship, especially in SMEs and other family-owned firms, and other related topics in the fields of entrepreneurship, innovation management and family business (especially in privately-held firms).

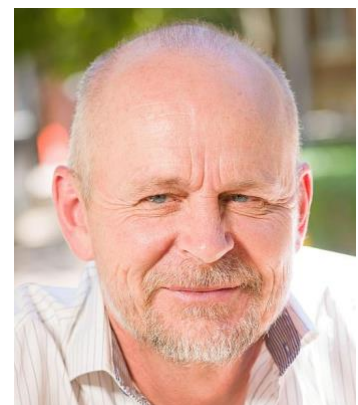


Professor Per Davidsson

Jönköping International Business School (JIBS)

Queensland University of Technology

Per Davidsson is Professor of Entrepreneurship at Jönköping International Business School (JIBS) since 1996. Retaining his affiliation with JIBS while his main affiliation was with Queensland University of Technology in Brisbane, Australia, 2004-2023, he has recently increased his engagement with JIBS and made it his main affiliation. Per is regarded one of the leading entrepreneurship researchers worldwide. He is currently focusing on 'external enablement', that is, how business-environmental changes (e.g., new technology and/or macroeconomic, regulatory, sociocultural, demographic and natural-environmental changes) create potentials that entrepreneurs can leverage for entrepreneurial action and success. He has also made well-cited contributions on small firm growth; nascent entrepreneurship; the venture creation process; entrepreneurial bricolage; and the role of entrepreneurship for regional development and job creation. From 2007 to 2012, he served as elected officer of the Entrepreneurship Division of the Academy of Management, including being its Chair in 2010/11. He has also served as Associate Editor for several leading, scholarly journal.





Office of the
Chief Scientist
& Engineer



ACERE 2024 - Program at a glance

MONDAY 5 th FEBRUARY	
9:30am – 5:00pm	Doctoral Consortium (By application)
5:30pm – 8:00pm	Doctoral Consortium Social at The Glebe Hotel (By invitation)

TUESDAY 6 th FEBRUARY	
9:00am – 3:00pm	Industry-Educator Forum (By invitation)
9:00am – 3:00pm	Paper Development Workshops (By application)
3:00pm – 3:30pm	Registration for Main conference
3:30pm – 4:00pm	Main Conference Welcome Address
4:00pm – 5:00pm	Opening Keynote: Professor Sophie Bacq <i>“Impact Research: Embracing Complexity to Drive Societal Change”</i>
5:00pm – 5:30pm	Walk to the Old Clare
5:30pm – 7:00pm	Welcome Drinks at The Old Clare Hotel (Bring your swimmers if you want to jump in the rooftop pool)

WEDNESDAY 7 th FEBRUARY	
9:00am – 10:00am	Keynote: Professor Matthew Grimes <i>“Looking Ahead: How Generative AI Will Change Entrepreneurship Research in the Next 10 Years”</i>
10:00am – 10:30am	Morning Tea
10:30am – 12:00pm	Parallel Paper Sessions 1
12:00pm – 1:00pm	Lunch
1:00pm – 2:30pm	Parallel Paper Sessions 2
2:30pm – 3:00pm	Afternoon Tea
3:00pm – 4:30pm	Parallel Paper Sessions 3
4:45pm – 5:30pm	Keynote Panel - ‘Entrepreneurship and societal change’ Prof. Danielle Logue, Prof. Karl Wennberg, A/Prof. Marilyn A. Uy Chair: Dr Jarrod Ormiston
5:30pm – 6:30pm	Take Train, Tram, Taxi or e-Bike to MCA (Circular Quay)
6:30pm – 10:30pm	Gala Event and Awards at MCA (Museum of Contemporary Art) (Canapes and drinks overlooking Sydney harbour)

THURSDAY 8 th FEBRUARY	
9:00am – 9:45am	Keynote: Professor Ajai Gaur - <i>“International Entrepreneurship”</i>
9:45am – 10:15am	Morning Tea
10:15am – 11:40am	Parallel Paper Sessions 4
11:40am – 1:00pm	Parallel Paper Sessions 5
1:00pm – 2:00pm	Lunch
2:00pm – 3:30pm	Parallel Paper Sessions 6
3:30pm – 4:00pm	Afternoon Tea
4:00pm – 5:00pm	Closing Panel – ‘Entrepreneurship as a complex, transdisciplinary, multi-level phenomenon’ Prof. Per Davidsson, Prof. Moren Lévesque, Prof. Lorraine Uhlaner Chair: Dr Jan Gruenhagen
5:00pm – 6:00pm	Closing Drinks at Aerial Conference Centre

Doctoral Consortium

MONDAY 5th FEBRUARY 2024

Location: [UTS Business School \(Building 8\)](#), Level 8, Room 003

Time	Activity
9:30 am – 9:40 am	Welcome & Introductions Facilitators: <i>Jan Henrik Gruenhagen¹, Jochen Schweitzer¹, Saskia de Klerk²</i>
9:40 am – 10:25 am	Meet your peers – “Speed dating” & Elevator pitches Facilitators: <i>Jan Henrik Gruenhagen¹, Jochen Schweitzer¹, Saskia de Klerk²</i>
10:25 am – 10:45 am	Your expectations & Overview Facilitators: <i>Jan Henrik Gruenhagen¹, Jochen Schweitzer¹, Saskia de Klerk²</i>
10:45 am – 11:15 am	Morning Tea
11:15 am – 12:00 pm	Panel discussion: Overcoming challenges in your PhD journey Panellists: <i>Per Davidsson^{3,4}, Saskia de Klerk², Jochen Schweitzer¹, Deepa Subhadrammal¹</i> Facilitator: <i>Jan Henrik Gruenhagen¹</i>
12:00 pm – 1:00 pm	Session 1 – Roundtable discussions in assigned groups, chaired by faculty <i>Each student is asked to come ready to provide a brief 5min verbal pitch of their research. The roundtable sessions will focus on sharing these insights with a small group of scholars doing similar work to you. You will then receive feedback and advice from senior scholars and colleagues.</i> Chairs: <i>Sophie Bacq⁵, Per Davidsson^{3,4}, Ajai Gaur⁶, Matthew Grimes⁷, Moren Lévesque⁸, Danielle Logue⁹, Lorraine Uhlaner¹⁰, Karl Wennberg¹¹</i>
1:00 pm – 1:45 pm	Lunch
1:45 pm – 2:45 pm	Session 2 – Continued discussions in assigned groups, chaired by faculty
2:45 pm – 3:20pm	Panel discussion: How to publish in good journals Panellists: <i>Sophie Bacq⁵, Ajai Gaur⁶, Matthew Grimes⁷, Karl Wennberg¹¹</i> Facilitator: <i>Saskia de Klerk²</i>
3:30 pm – 3:45 pm	Afternoon Tea
3:45 pm – 4:30 pm	Panel discussion: Starting your career in academia, industry, or government Panellists: <i>Forough Zarea³, Chad Renando¹², Mark von Rijmenam, Jonah Zankl¹³</i> Facilitator: <i>Jochen Schweitzer¹</i>
4:30 pm – 4:50 pm	Ask Me Anything – with <i>Per Davidsson^{3,4}</i>
4:50 pm – 5:00 pm	Wrap-up
5:30 pm – 8:00 pm	Doctoral Consortium Reception at the Glebe Hotel, 63 Bay St, Glebe

¹University of Technology Sydney, ²University of the Sunshine Coast, ³Queensland University of Technology, ⁴Jönköping University, ⁵IMD, ⁶Rutgers Business School, ⁷University of Cambridge, ⁸York University, ⁹University of New South Wales, ¹⁰Prague University of Economics and Business, ¹¹Stockholm School of Economics, ¹²University of Southern Queensland, ¹³University of Queensland

Paper Development Workshops (PDWs)

TUESDAY 6th FEBRUARY

Location: [Aerial Conference Centre](#) – UTS Building 10, Level 7

Time	Activity
9:00 am – 10:30 am	Welcome & Meet the editors and journals <ul style="list-style-type: none">• Sophie Bacq, <i>Journal of Business Venturing</i>• Ajai Gaur, <i>Journal of World Business</i>• Matthew Grimes, <i>Academy of Management Journal</i>• Karl Wennberg, <i>Entrepreneurship Theory and Practice</i> Chairs: Rui Torres de Oliveira & Jan Henrik Gruenhagen
10:30 am – 11:00 am	Morning Tea
11:00 am – 12:00 pm	Panel Discussion: <i>Generative AI and other trending topics</i> Chair: Rui Torres de Oliveira Panellists: Sophie Bacq (JBV), Ajai Gaur (JWB), Matthew Grimes (AMJ), Karl Wennberg (ETP)
12:00 pm – 1:00 pm	Roundtable workshops: JBV, JWB, AMJ, ETP Chairs: <ul style="list-style-type: none">• Sophie Bacq• Giuseppe Criaco• Per Davidsson• Ajai Gaur• Matthew Grimes• Anna Jenkins• Moren Lévesque• Martin Obschonka• Andreas Rauch• Sam Tavassoli• Marilyn Uy• Karl Wennberg• Stephen Zhang
1:00 pm – 2:00 pm	Lunch
2:00 pm – 3:00 pm	Roundtable workshops continued: JBV, JWB, AMJ, ETP
3:00 pm – 3:30 pm	Afternoon Tea & Registration for main conference
3:30 pm – 5:00 pm	ACERE Main Conference starts

Industry-Educator Forum



TUESDAY 6th FEBRUARY

Location: [Aerial Conference Centre](#) – UTS Building 10, Level 7

Time	Activity		
8:30 am-9:00 am	Registration and networking		
9:00 am-9:10 am	Welcome from Professor Glenn Wightwick (Deputy Vice-Chancellor of Enterprise, UTS)		
9:10 am-9:15 am	Opening Remarks – Katie Knight (Deputy Secretary, Investment NSW)		
9:15 am-9:35 am	Keynote – Kate Russell (CEO, Supply Nation)		
9:35 am-9:45 am	NSW Innovation and Productivity Council Address - Accelerating NSW: Insights from startups and startup support organisations and the Council's next phase of research – Richard Kimber (NSW Innovation and Productivity Council member and Chair, Stone & Chalk)		
09:45 am-10:30 am	Interactive session #1 Accelerating NSW overview and discussion - Dr Jarrod Ormiston (Senior Lecturer, UTS)		
10:30 am-11:00 am	Morning Tea		
11:00 am – 12:00 pm	<table border="0" style="width: 100%;"> <tr> <td style="width: 50%; vertical-align: top;"> <p><u>Breakout Discussions: #1.1</u> Theme - Creating inclusive entrepreneurial ecosystems Speakers:</p> <ul style="list-style-type: none"> - Lou Conway (Director, UNE SMART Region Incubator) - Crystal McGregor (Program Lead, Tech Ready Women) - Usman Iftikhar (CEO, Catalysr) - Rachel Sperinck (Founder, PAH!) <p>Chair:</p> <ul style="list-style-type: none"> - Louise Gillespie (Associate Director, NSW Innovation and Productivity Council, Investment NSW) </td> <td style="width: 50%; vertical-align: top;"> <p><u>Breakout Discussions: #1.2</u> Theme - Scaling Speakers:</p> <ul style="list-style-type: none"> - Megan Fisher (CEO, Energy Lab) - Duco van Breemen (CEO, Haymarket HQ) - Dina Titkova (Senior Manager, Startups, UNSW Founders) <p>Chair:</p> <ul style="list-style-type: none"> - Claire Mula (Founder, Made for Scale) </td> </tr> </table>	<p><u>Breakout Discussions: #1.1</u> Theme - Creating inclusive entrepreneurial ecosystems Speakers:</p> <ul style="list-style-type: none"> - Lou Conway (Director, UNE SMART Region Incubator) - Crystal McGregor (Program Lead, Tech Ready Women) - Usman Iftikhar (CEO, Catalysr) - Rachel Sperinck (Founder, PAH!) <p>Chair:</p> <ul style="list-style-type: none"> - Louise Gillespie (Associate Director, NSW Innovation and Productivity Council, Investment NSW) 	<p><u>Breakout Discussions: #1.2</u> Theme - Scaling Speakers:</p> <ul style="list-style-type: none"> - Megan Fisher (CEO, Energy Lab) - Duco van Breemen (CEO, Haymarket HQ) - Dina Titkova (Senior Manager, Startups, UNSW Founders) <p>Chair:</p> <ul style="list-style-type: none"> - Claire Mula (Founder, Made for Scale)
<p><u>Breakout Discussions: #1.1</u> Theme - Creating inclusive entrepreneurial ecosystems Speakers:</p> <ul style="list-style-type: none"> - Lou Conway (Director, UNE SMART Region Incubator) - Crystal McGregor (Program Lead, Tech Ready Women) - Usman Iftikhar (CEO, Catalysr) - Rachel Sperinck (Founder, PAH!) <p>Chair:</p> <ul style="list-style-type: none"> - Louise Gillespie (Associate Director, NSW Innovation and Productivity Council, Investment NSW) 	<p><u>Breakout Discussions: #1.2</u> Theme - Scaling Speakers:</p> <ul style="list-style-type: none"> - Megan Fisher (CEO, Energy Lab) - Duco van Breemen (CEO, Haymarket HQ) - Dina Titkova (Senior Manager, Startups, UNSW Founders) <p>Chair:</p> <ul style="list-style-type: none"> - Claire Mula (Founder, Made for Scale) 		
12:00 pm – 1:00 pm	<table border="0" style="width: 100%;"> <tr> <td style="width: 50%; vertical-align: top;"> <p><u>Breakout Discussions #2.1</u> Theme - Research commercialization Speakers:</p> <ul style="list-style-type: none"> - Rupal Ismin (Director, Sydney Knowledge Hub) - Ingrid Marsh (Director, Cicada Innovations) - Katie Green (Project Leader/Operations Manager, CSIRO) <p>Chair:</p> <ul style="list-style-type: none"> - A/Professor Martin Bliemel (UTS) </td> <td style="width: 50%; vertical-align: top;"> <p><u>Breakout Discussions #2.2</u> Theme – Social/sustainable enterprise Speakers:</p> <ul style="list-style-type: none"> - Reece Proudfoot (Co-founder, Regen Labs) - Alice Brennan (Incubator Manager, SEFA Partnerships) - Rebecca Duldig (Business Development Manager, iAccelerate, UoW) <p>Chair:</p> <ul style="list-style-type: none"> - Dr Jarrod Ormiston (UTS) </td> </tr> </table>	<p><u>Breakout Discussions #2.1</u> Theme - Research commercialization Speakers:</p> <ul style="list-style-type: none"> - Rupal Ismin (Director, Sydney Knowledge Hub) - Ingrid Marsh (Director, Cicada Innovations) - Katie Green (Project Leader/Operations Manager, CSIRO) <p>Chair:</p> <ul style="list-style-type: none"> - A/Professor Martin Bliemel (UTS) 	<p><u>Breakout Discussions #2.2</u> Theme – Social/sustainable enterprise Speakers:</p> <ul style="list-style-type: none"> - Reece Proudfoot (Co-founder, Regen Labs) - Alice Brennan (Incubator Manager, SEFA Partnerships) - Rebecca Duldig (Business Development Manager, iAccelerate, UoW) <p>Chair:</p> <ul style="list-style-type: none"> - Dr Jarrod Ormiston (UTS)
<p><u>Breakout Discussions #2.1</u> Theme - Research commercialization Speakers:</p> <ul style="list-style-type: none"> - Rupal Ismin (Director, Sydney Knowledge Hub) - Ingrid Marsh (Director, Cicada Innovations) - Katie Green (Project Leader/Operations Manager, CSIRO) <p>Chair:</p> <ul style="list-style-type: none"> - A/Professor Martin Bliemel (UTS) 	<p><u>Breakout Discussions #2.2</u> Theme – Social/sustainable enterprise Speakers:</p> <ul style="list-style-type: none"> - Reece Proudfoot (Co-founder, Regen Labs) - Alice Brennan (Incubator Manager, SEFA Partnerships) - Rebecca Duldig (Business Development Manager, iAccelerate, UoW) <p>Chair:</p> <ul style="list-style-type: none"> - Dr Jarrod Ormiston (UTS) 		
1:00 pm – 2:00 pm	Lunch		
2:00 pm - 3:00 pm	<p>Interactive session: #3 Moving the ecosystem forward Discussion leaders:</p> <ul style="list-style-type: none"> - Dr Chad Renando (Research Fellow, USQ and Manager Director, GEN Australia) - Professor Dilek Centindamar Kozanoglu (FEIT, UTS) - Dr Mariana Gonzalez Lago (Postdoctoral Researcher, UTS) - Melissa Ryan (Director Incubation & Entrepreneurship, Macquarie University) - Rachel Sperinck (Founder, PAH!) - Gabriella Nunes (Director, Research & Commercialisation, TRaCE, UNSW) - Adeline Chu (Entrepreneurs in Residence, Western Sydney University (WSU) Launchpad) 		

Main Conference Agenda

Location: [Aerial Conference Centre](#) – UTS Building 10, Level 7

TUESDAY 6 th FEBRUARY	
3:00pm – 3:30pm	Registration for Main conference
3:30pm – 4:00pm	Main Conference Welcome Address Professor Glenn Wightwick (Deputy Vice-Chancellor of Enterprise, UTS)
4:00pm – 5:00pm	Opening Keynote: Professor Sophie Bacq <i>“Impact Research: Embracing Complexity to Drive Societal Change”</i>
5:00pm – 5:30pm	Walk to The Old Clare Hotel
5:30pm – 7:00pm	Welcome Drinks at The Old Clare Hotel (Bring your swimmers if you want to jump in the rooftop pool)

WEDNESDAY 7 th FEBRUARY	
9:00am – 10:00am	Keynote: Professor Matthew Grimes <i>“Looking Ahead: How Generative AI Will Change Entrepreneurship Research in the Next 10 Years”</i>
10:00am – 10:30am	Morning Tea
10:30am – 12:00pm	Parallel Paper Sessions 1
12:00pm – 1:00pm	Lunch
1:00pm – 2:30pm	Parallel Paper Sessions 2
2:30pm – 3:00pm	Afternoon Tea
3:00pm – 4:30pm	Parallel Paper Sessions 3
4:45pm – 5:30pm	Keynote Panel - 'Entrepreneurship and societal change' Prof. Danielle Logue, Prof. Karl Wennberg, A/Prof. Marilyn A. Uy Chair: Dr Jarrod Ormiston
5:30pm – 6:30pm	Take Train, Tram, Taxi or e-Bike to MCA (Circular Quay)
6:30pm – 10:30pm	Gala Event and Awards at MCA (Museum of Contemporary Art) (Canapes and drinks overlooking Sydney harbour)

THURSDAY 8 th FEBRUARY	
9:00am – 9:45am	Keynote: Professor Ajai Gaur
9:45am – 10:15am	Morning Tea
10:15am – 11:40am	Parallel Paper Sessions 4
11:40am – 1:00pm	Parallel Paper Sessions 5
1:00pm – 2:00pm	Lunch
2:00pm – 3:30pm	Parallel Paper Sessions 6
3:30pm – 4:00pm	Afternoon Tea
4:00pm – 5:00pm	Closing Panel – ‘Entrepreneurship as a complex, transdisciplinary, multi-level phenomenon’ Prof. Per Davidsson, Prof. Moren Lévesque, Prof. Lorraine Uhlener Chair: Dr Jan Gruenhagen
5:00pm – 6:00pm	Closing Drinks at Aerial Conference Centre

Parallel Paper Session 1 – Wednesday 7th Feb, 10:30am – 12:00pm

Theme: High Technology Entrepreneurship/Incubators	Theme: Family Business / SMEs	Theme: Gender Issues in Entrepreneurship	Theme: New Venture Creation and Funding	Theme: Entrepreneurial Ecosystems and Complexity
Room: Harris	Room: Jones	Room: Broadway	Room: Thomas	Room: Wattle
Session: 1A	Session: 1B	Session: 1C	Session: 1D	Session: 1E
Chair: Dilek Cetindamar Kozanoglu	Chair: Erik Lundmark	Chair: Marilyn Uy	Chair: Claire Bi	Chair: Chad Renando
<p>#22 - Human and technological actors in digital transformation: A systematic literature review and future research agenda Authors: Stuart Cranney, Retha Scheepers, Rory Mulcahy</p>	<p>#108 - Succession challenges of Chinese family business: an institutional and multi-stakeholder perspective Authors: Chenjun Huang, Sarah Cooper, Ling Liu</p>	<p>#42 - Equality Matters: An Ideology Perspective on the Gender Gap in Entrepreneurship Authors: Shi Tang, Taiyuan Wang</p>	<p>#16 - The Trajectory of External Enablers and the Reasoning behind Perceived Entrepreneurial Potential Authors: Jiyoung Kim, Per Davidsson</p>	<p>#36 - Interconnectedness of elements within Entrepreneurial Ecosystem: A Complex Adaptive system perspective Authors: Pallavpreet Kaur, Sam Tavassoli, Fannie Wu</p>
<p>#35 - Adoption of Artificial Intelligence as an Entrepreneurial Strategy in Healthcare: A Qualitative Investigation Authors: Julia Roppelt, Anna Jenkins, Dominik K. Kanbach</p>	<p>#90 - Responses to decline and disruption in mature SMEs – towards a curatorship theory of entrepreneurship Authors: Gareth Thomas, Jin-ichiro Yamada, Yuki Hayashi</p>	<p>#44 - Renewing female entrepreneurship: An exploratory study of Europe's post-pandemic arts and creative industries Authors: Iulia Stroila, Henry Shi</p>	<p>#19 - Market Intermediary and Entrepreneurial Opportunities in Creative Industries Authors: Shu Deng, Dennis Park, Anmol Madan</p>	<p>#58 - This Place is a Jungle: A Process of Maintaining Entrepreneurial Ecosystems Authors: Jonah Zankl, Matthew Grimes</p>
<p>#56 - The Process of Social Media-enabled Entrepreneurship: Exploring Bloggers' Successful Change from Social Media Users to Entrepreneurs Authors: Shuyun Sun, Fiona Buick, Daniel Prior</p>	<p>#99 - Unleashing Potential: SMEs' Crisis Reactions and the Power of Capacity Release Authors: Suna Løwe Nielsen, Kim Klyver, Elco van Burg</p>	<p>#49 - Hubris, Positivity, Gender, and Mission as drivers of Entrepreneurial Self-efficacy Authors: Evan Douglas, Helen Salavou, Xenia Mamakou</p>	<p>#26 - Costly versus costless entrepreneurial signaling: Not what it seems Authors: Greg Nyilasy</p>	<p>#65 - State as entrepreneurial actor: How innovation districts foster entrepreneurialism Authors: Kathryn Anderson</p>
<p>#67 - Determinants of Entrepreneurial Intention towards Digital Adoption during Crisis Authors: Olga Verkhovskaya, Karina Bogatyreva</p>	<p>#88 - Organisational Learning in Family Firms: A systematic review Authors: Thomas Moser, Retha Scheepers, Saskia de Klerk</p>	<p>#113 - How Does Context Shape "Innovation" Sensemaking in Rural Women-Led Agribusinesses? A comparative Study Authors: Maheshika Kande Kankanamalage, Julienne Senyard, Kanchana Kariyawasam</p>	<p>#168 - Entrepreneurial actions without opportunities: The role of sociocultural context Authors: Anna Brattström, Karl Wennberg, Mickael Buffart</p>	<p>#182 - Identifying Critical Configurations of Active and Passive Precinct Attributes for Optimal Innovative-Entrepreneurship Outputs Authors: Kevin Chan, Allan O'Connor</p>

Parallel Paper Session 2 - Wednesday 7th Feb, 1:00pm – 2:30pm

Theme: Sustainable Entrepreneurship	Theme: Family Business / SMEs	Theme: Resilience and Identity	Theme: Social Entrepreneurship	Theme: Entrepreneurial Ecosystems and Complexity
Room: Harris	Room: Jones	Room: Broadway	Room: Thomas	Room: Wattle
Session: 2A	Session: 2B	Session: 2C	Session: 2D	Session: 2E
Chair: Rui Torres de Oliveira	Chair: Julianne Senyard	Chair: Martie-Louise Verreyne	Chair: Anya Phelan	Chair: Frederik von Briel
<p>#45 - Radical change or incremental progress? Investigating the alignment of green venture capital investment approaches with the green transition</p> <p>Authors: Meike Siefkes, Anton Lohne Hamer, Øyvind Bjørgum</p>	<p>#32 - Strategic responses of Chinese family firms during times of external disruption: Examining family involvement and dynamic capabilities</p> <p>Authors: Yao Zhou, Christopher Graves, Henry Shi</p>	<p>#51 - Resilience Strategies in Product Innovation in Founder-Led High-Tech Firms: The Role of Founders' Identity and Attention Focus</p> <p>Authors: Raluca Bunduchi Catalina Crisan Sarah Cooper</p>	<p>#27 - Scaling social impact: Social entrepreneurs' composition of social bricolage and identity work in emerging economies</p> <p>Authors: Emiel Eijdenberg, Felix Ostertag</p>	<p>#184 - The national landscape of supports for social ventures in Australia: a social entrepreneurial ecosystem or a social entrepreneurial biome?</p> <p>Authors: Michael Moran, Jarrod Ormiston, Libby Ward-Christie</p>
<p>#70 - A simulation approach to the emergence of heavy-tailed distribution in entrepreneurship</p> <p>Authors: Julien Salanave, Jaehu Shim</p>	<p>#190 - The Use and Adoption of Digital Technology among Small and Medium Enterprises (SMEs) in Indonesia: A Multi-Stage Approach using PLS-SEM and Artificial Neural Network</p> <p>Authors: Faiz Faiz, Viet Le, Eryadi Kordi Masli</p>	<p>#64 - Resilience in Emerging Markets: Examining Resilience Strategies and Founder Identity in Nigerian Early-Stage Ventures</p> <p>Authors: Natasha Ashley Raluca Bunduchi Sarah Cooper</p>	<p>#82 - Negotiating Hybrid Entrepreneur Work Transitions: Resource-Demand Explanation</p> <p>Authors: Dilani Jayawarna, Susan Marlow, Angela Dy</p>	<p>#186 - Understanding the impact of entrepreneurial support organisations (ESOs): A multi-level framework</p> <p>Authors: Jarrod Ormiston, Martin Bliemel, Mariana Gonzalez Lago, Dilek Cetindamar Kozanoglu, Jochen Schweitzer, Chad Renando</p>
<p>#80 - Driving Sustainability: Exploring External Enablement of a Sustainable Automotive Recycling Industry in Australia</p> <p>Authors: Sarfraz Ali Kyani, Per Davidsson, Dietmar W Hutmacher, Martin Obschonka</p>	<p>#31 - Explaining entrepreneurial heterogeneity among family firms through paradox salience mechanisms</p> <p>Authors: Lorraine Uhlaner, Camille Pradies, Magali Canovi</p>	<p>#98 - Enhancing entrepreneurial well-being: A dynamic model of coping strategies to regulate obsessive entrepreneurial passion</p> <p>Authors: Fathima Fasana Sanoon, Jenny Gibb, Antoine Gilbert Saad</p>	<p>#194: Exploring perspectives of design and entrepreneurship</p> <p>Authors: Judy Matthews</p>	<p>#201 - The contribution of the innovation hub on community resilience in rural economies</p> <p>Authors: Chad Renando</p>
<p>#97 - From Niche to Mainstream: An Interdisciplinary Review of Sustainable Finance in Entrepreneurship</p> <p>Authors: Jessie ST Cheung, Marilyn Ang Uy</p>	<p>#209 - Premium or Discount? Exploring How Motivations, Capabilities and Context Condition The Value Realized in the Sale of Private Family Firms</p> <p>Authors: Giuseppe Criaco, Hans van Oosterhout, Francisco Urzua Infante</p>	<p>#127 - Selling yourself without selling out: Identity construction in artisanal perfumeries</p> <p>Authors: Max Ganzin, Erik Lundmark, Gazi Islam, Anna Krzeminska, Francesco Chirico</p>		<p>#203 - Entrepreneurial Ecosystems Concepts and Methods</p> <p>Authors: Allan O'Connor</p>

Parallel Paper Session 3 - Wednesday 7th Feb, 3:00pm – 4:30pm

Theme: Alliances, Teams & Networks	Theme: Corporate Entrepreneurship	Theme: Entrepreneurial Cognition	Theme: Social Entrepreneurship	Theme: Entrepreneurial Ecosystems and Complexity
Room: Harris	Room: Jones	Room: Broadway	Room: Thomas	Room: Wattle
Session: 3A	Session: 3B	Session: 3C	Session: 3D	Session: 3E
Chair: Kim Klyver	Chair: Jan Henrik Gruenhagen	Chair: Jaehu Shim	Chair: Jarrod Ormiston	Chair: Martin Bliemel
<p>#57 - How diversified should a founding team be? Insights from simulating tradeoffs between venture performance and risk of disruption</p> <p>Authors: Vivek Sundriyal, Moren Levesque, Karl Wennberg, Axel Norgren</p>	<p>#192 - Assessing Technology Adoption Risks in SMEs: A Cross-Industry Study of Industry 4.0 Implementation</p> <p>Authors: Forough Zarea, Nicholas Johnson, Bahram Farhadinia, Tim Rose, Anna Wiewiora</p>	<p>#21 - Foundations, triggers, and cognitive transformations in social entrepreneurship</p> <p>Authors: Qingqing Bi</p>	<p>#79 - You say support, I say tensions: Navigating rules and roles of beneficiary entrepreneurs in a social enterprise</p> <p>Authors: Soniya Rijal, Josh Keller, Hokyung Hwang</p>	<p>#41 - Unpacking Configurations of Digital Entrepreneurial Ecosystems</p> <p>Authors: Iulia Stroila, Matteo Rosing</p>
<p>#59 - Director Turnover in New Venture Boards</p> <p>Authors: Chanchal Balachandran, Karl Wennberg</p>	<p>#78 - Digital transformation in traditional banks: Unraveling the web of industry 4.0</p> <p>Authors: Thiago Felipe. Rui Torres de Oliveira, Agnes Toth-Peter, Uwe Dulleck, Shane Matthews</p>	<p>#62 - A Social Cognitive Career Theory (SCCT) Approach to Social Norms, Gender and Students' Entrepreneurial Intentions</p> <p>Authors: Michael J Mustafa, Jia Wei Chin</p>	<p>#161 - Empowering Entrepreneurs to Launch Net Zero-Enabled Businesses through University Education</p> <p>Authors: Syed Yaqzan, Muhammad Azmar, Imran Zawwar</p>	<p>#12 - Lived Experience with University Spin-Outs in a Disruptive Era: the Role of Goodwill</p> <p>Author: Andrew Stranieri</p>
<p>#73 - Transferring SMEs to Teams of Workers through the Cooperative Model: Success Factors Endogenous and Exogenous to the Entrepreneurial Teams</p> <p>Authors: Sandra Dubouloz, Cédric Favre Catherine, Thevenard-Puthod</p>	<p>#91 - Don't give up, adapt! Persistence pays off through entrepreneurial selling</p> <p>Authors: John Edwards, Morgan Miles, Steven D'Alessandro</p>	<p>#167 - Entrepreneurial alumni: Evidence of lasting impact of an entrepreneurship education program</p> <p>Authors: Deepa Subhadrammal, Martin Bliemel, Jochen Schweitzer</p>	<p>#134 - Civic wealth creation, remote communities, and the circular economy</p> <p>Authors: Anya Phelan, Sara Ekberg</p>	<p>#95 - Mobilizing resources for agility: the role of ecosystems</p> <p>Authors: Magnus Holmen, Maya Hoveskog, Magnus Bergquist, Anya Ernest</p>
<p>#163 - The Role of Bricolage and Engineering in Navigating the Paradox of Standardisation and Adaptation in Franchising</p> <p>Authors: Liza Tyl, Erik Lundmark, Francesco Chirico</p>	<p>#103 - Artificial Intelligence and Corporate Venture Capital: How Investments in Start-ups Influence Artificial Intelligence Adoption</p> <p>Authors: Torben Nübel, Antonio Braeunche, David Makrucki</p>	<p>#193 - How to measure something that is hard to standardise: scale development for creativity and innovation enabling behaviours</p> <p>Authors: Richard Laferriere, Aron Perenyi</p>	<p>#142 - Competing Institutional Logics and Mission Drift under Authoritarianism: A Three-Wave Longitudinal Study of Environmental NGOs in China</p> <p>Authors: Manlin Xiao, Xueyong Zhan, Juyoung Lee</p>	<p>#128 - Assessment of Regional and Institutional Antecedents on Innovation Performance: Evidence from University Spin-offs in Japan</p> <p>Authors: Vy Hung Ho, Jin-ichiro Yamada</p>

Parallel Paper Session 4 – Thursday 8th Feb, 10:15am – 11:40am

Theme: Entrepreneurship Education & Training	Theme: Psychology of Entrepreneurship	Theme: Entrepreneurial Cognition	Theme: High Technology Entrepreneurship	Theme: Entrepreneurial Growth & Performance
Room: Harris	Room: Jones	Room: Broadway	Room: Thomas	Room: Wattle
Session: 4A	Session: 4B	Session: 4C	Session: 4D	Session: 4E
Chair: Sarah Cooper	Chair: Andreas Rauch	Chair: Martin Bliemel	Chair: Dilek Cetindamar Kozanoglu	Chair: Saskia de Klerk
<p>#126 - The impact of entrepreneurship education programs on students' entrepreneurial competencies: A pre-post test analysis of entrepreneurship education programs</p> <p>Authors: Enkhzaya Nergui, Hiromi Yamada</p>	<p>#129 - Entrepreneurship and the psychedelic renaissance: A scoping review</p> <p>Authors: Anya Phelan, Sara Ekberg, Mark Loon</p>	<p>#34 - CEO narcissism and venture strategy during disruptions</p> <p>Authors: Richa Chugh, Audra Mockaitis, Stephen E. Lanivich, Javad E. Nooshabadi</p>	<p>#85 - How Can Public Research Funding Promote Innovation More Directly? Innovation-Driven Publicly-Funded Research Centers and their Relative Technology Transfer Efficiency</p> <p>Authors: Forough Zarea, Evan Douglas, Martin Obschonka, Per Davidsson, David B Audretsch, Dietmar W Hutmacher</p>	<p>#33 - Continuing or Breaking the Paths to Entrepreneurial Reentry: A Review and Research Agenda</p> <p>Authors: Nikan Rezvani, Anna Krzeminska, Francesco Chirico, Dean Shepherd, R. Duane Ireland</p>
<p>#160 - The Elements of Innovation: Introducing the Periodic System for Innovation Competencies (PSIC)</p> <p>Authors: Christoph Buck, Christoph Hofbeck, Nina Weber</p>	<p>#68 - Exploring Entrepreneurs' Emotional Labor and Its Effects</p> <p>Authors: Yudi Hou, Paul Steffens, Stephen Zhang</p>	<p>#82 - Negotiating Hybrid Entrepreneur Work Transitions: Resource-Demand Explanation</p> <p>Authors: Dilani Jayawarna, Susan Marlow, Angela Dy</p>	<p>#183 - Tools for Digital Entrepreneurs</p> <p>Authors: Dilek Cetindamar</p>	<p>#66 - Early-stage technology start-up performance in the entrepreneurial ecosystem: An Effectuation and Network theories perspective</p> <p>Authors: Randhita Nanayakkara, Mile Terziovski, Richard Laferriere</p>
<p>#197 - Experiential learning in entrepreneurship education: A bibliometric analysis</p> <p>Authors: Chamindika Weerakoon, Trina Fizzanty, Eryadi Kordi Masli, Jerome Donovan</p>	<p>#162 - Entrepreneurial potential: What is it and what do we know? A theoretical model and scoping review of the empirical evidence.</p> <p>Authors: Ann-Louise Holten, Frej Sørensen</p>	<p>#114 - Tools or teammates? A socio-cognitive perspective on employee propensity to embrace or resist cognitive technologies in digital transformation.</p> <p>Authors: Stuart Cranney, Rory Mulcahy, Retha Scheepers</p>	<p>#106 - Configurational paths of government regulation and support affecting product innovation performance: Focusing on the Korean automobile industry</p> <p>Authors: Youngwook Park, Hosung Son</p>	<p>#75 - Transdisciplinary Design Practices as the Realization of Entrepreneurial Business Modelling</p> <p>Authors: Jan Auernhammer, Jan Henrik Gruenhagen</p>
<p>#180 - Using Bronfenbrenner's bioecological model to understand entrepreneurial competency development</p> <p>Authors: Deepa Subhadrammal, Martin Bliemel, Jochen Schweitzer</p>	<p>#179 - Who is an entrepreneur, or was Schumpeter right? Deep learning vs. human experts in testing entrepreneurial distinctiveness</p> <p>Authors: Martin Obschonka, Tharindu Warnakulasuriya, Christian Fisch, Clinton Fookes</p>	<p>#200 - Does economic policy uncertainty hinder entrepreneurial activities? The intervening role of opportunity perception and the contingent role of informal and formal institutions</p> <p>Authors: Abu Zafar Shahriar, Mahabubur Rahman, Mokter Hossain, Masoud Karami</p>		<p>#116 - Customer involvement in the entrepreneurship process: A systematic literature review and future research directions</p> <p>Authors: Sayuri Wijekoon, Aron O'Cass, Mahdi Vesal, Francesco Chirico</p>

Parallel Paper Session 5 - Thursday 8th Feb, 11:40am – 1:00pm

Theme: Entrepreneurship Education & Training	Theme: Indigenous & Minority Entrepreneurship	Theme: Nascent industries and ventures	Theme: Entrepreneurial Strategy	Theme: Entrepreneurial Growth & Performance
Room: Harris	Room: Jones	Room: Broadway	Room: Thomas	Room: Wattle
Session: 5A	Session: 5B	Session: 5C	Session: 5D	Session: 5E
Chair: Michael Moran	Chair: Jarrod Ormiston	Chair: Forough Zarea	Chair: Martin Obschonka	Chair: Per Davidsson
<p>#18 - Unveiling Constraints and Charting Pathways: A Comprehensive Examination of Entrepreneurship Education Research Methodology and Challenges</p> <p>Authors: Daniil Pokidko, Natasha Pokidko, Ronny Eriksson</p>	<p>#86 - From Enlistment to Startup: Unravelling the Voyage of Australian Veterans Embracing Entrepreneurship</p> <p>Authors: Rachel Atkins, Jochen Schweitzer, Natalia Nikolova, Robert Wood</p>	<p>#145 - Venture Growth in the Digital Age: A Review and Research Agenda</p> <p>Authors: Simon Beuse, Frederik von Briel, Henri Burgers</p>	<p>#69 - An exploration of the entrepreneurial jungle: a review of organizational forms</p> <p>Authors: Macarena Tabilo, Andreas Rauch</p>	<p>#131 - External environmental change: enabling and constraining new venture formation</p> <p>Authors: Ian Elsum, Hien Dao</p>
<p>#130 - Developing an Entrepreneurial University through Entrepreneurial Training</p> <p>Authors: Julienne Senyard, Sara Ekberg, Naomi Birdthistle</p>	<p>#93 - Perception of Threat versus Opportunity from Crisis: Ukrainian Refugee Entrepreneurs</p> <p>Authors: Kim Klyver, Paul Steffens</p>	<p>#122 - When Two Heads Become Better than One: Co-Innovating into a Nascent Industry</p> <p>Authors: Dan-Wei (Marian) Wen</p>	<p>#117 - Navigating Moral Boundaries: Repugnance Entrepreneurs and the Legitimization of Repugnant Transactions</p> <p>Authors: Aureliu Sindila, Nicolai Foss, Xueyong Zhan</p>	<p>#30 - Enhancing SME innovativeness via owners' social capital and network mobilization</p> <p>Authors: Lorraine Uhlaner, Ondrej Machek, Martin Lukes, Ales Kubicek, Jiri Hnilica</p>
<p>#137 - Training University Teachers in Entrepreneurship Education: The Impact of an Introductory Course</p> <p>Authors: Fufen Jin, Gunhild Marie Roald</p>	<p>#198 - Prosocial motivation and nascent entrepreneurs: An indigenous perspective of student entrepreneurs in Kenya</p> <p>Authors: Rose Bote, Michael Ngoasong</p>	<p>#191 - Investigating the Concept of Sustainable Entrepreneurship through New Venture Creation Process</p> <p>Authors: Thanaphol Virasa, Krisakorn Sukvejworakit</p>	<p>#125 - The role of business models templates in the process of designing business models in startups</p> <p>Authors: Carlos Rincon, Anna Jenkins, Lisette Pregelj, Sam MacAulay</p>	<p>#151 - Success Factors and Strategies of digital Platforms in B2B Contexts: A Logistics Industry Perspective</p> <p>Authors: Julius de Groot, Simon Hensellek, Torben Nübel</p>
<p>#141 - Entrepreneurship education for everyone? Nudging entrepreneurial career aspirations among students of all genders</p> <p>Authors: Conny Steenblock, Janina Sundermeier</p>		<p>#143 - How to get fish in troubled waters? Post-entry performance in a nascent industry</p> <p>Authors: Dan-Wei (Marian) Wen, Li-Wei Zheng</p>	<p>#189 - Agglomeration economies, the birth and infancy performance of new firms: Evidence along the industry life cycle</p> <p>Authors: Viroj Jienwatcharamongkhol, Javier Changoluisa, Aldo Salinas</p>	<p>#211 - Family Orientation, owners' collective orientation, and satisfaction with economic and noneconomic goals in the SME context</p> <p>Authors: Lorraine Uhlaner, Ondrej Machek, Ales Kubicek</p>

Parallel Paper Session 6 - Thursday 8th Feb, 2:00pm – 3:30pm

Theme: Entrepreneurship Education & Training	Theme: Gender Issues in Entrepreneurship	Theme: Research methods/ New venture creation	Theme: Resilience and Identity	Theme:
Room: Harris	Room: Jones	Room: Broadway	Room: Thomas	Room: Wattle
Session: 6A	Session: 6B	Session: 6C	Session: 6D	Session: 6E
Chair: Sara Ekberg	Chair: Deepa Subhadrammal	Chair: Jan Henrik Gruenhagen & Jochen Schweitzer	Chair: Anna Jenkins	
<p>#46 - Student Cooperatives as a Means to Promote Entrepreneurial Thinking</p> <p>Authors: Dietmar Roessl, Martina Pieperhoff</p>	<p>#23 - Breaking the glass ceiling of women's entrepreneurial intention in Bio&MedTech</p> <p>Authors: Jovanna Nathalie Cervantes Guzman, Shane Mathews, Dietmar W Hutmacher</p>	<p>#100 - Welcoming Our New Multi-lingual AI Research Assistant Overlords: Investigating the Promise of Large Language Models for Concept Measurement Using Content Analysis</p> <p>Authors: Salih Zeki Ozdemir, Angel Sharma, Ao Zan, Arahat Tuladhar</p>	<p>#53 - Intergenerational Transmission of Entrepreneurial Intentions</p> <p>Authors: Helen Salavou, Evan Douglas, Xenia Mamakou</p>	
<p>#107 - Using Decision Tree Approach to Predict Completion Status in an Online Entrepreneurship Education Course</p> <p>Authors: Jia Wei Chin, Melati Nungsari, Muhammad Farhan Shahmi Abdullah, Yue Qing Wah</p>	<p>#50 - The Unkindest Cut? Glass Scissors and Women's Career Progression in Entrepreneurial Finance</p> <p>Authors: Suwen Chen, Richard Harrison</p>	<p>#101 - Unlocking entrepreneurship insights: Leveraging ChatGPT-4 for advanced text analysis</p> <p>Authors: Madeleine Meurer, Per Davidsson, Rasmus Rahm</p>	<p>#124 - Ongoing Identity Work in Hobby-Driven Lifestyle Entrepreneurship</p> <p>Authors: Diana Ivanycheva, Erik Lundmark, Jaco Lok</p>	
<p>#154 - Embedding entrepreneurship education: A process model for entrepreneurship educators from different disciplines</p> <p>Authors: Gunhild Marie Roald, Fufen Jin</p>	<p>#133 - Entrepreneurial self-efficacy and the NextGen gender gap: Explanatory factors and barriers.</p> <p>Authors: Ann-Louise Holten, Kasper Meisner Nielsen</p>	<p>#29 - Entrepreneurial action and its relationship with uncertainty</p> <p>Authors: Yi Jiang, Bilal Jathol</p>	<p>#158 - What have we done to organization? How root metaphors from the management field are used in entrepreneurship research</p> <p>Authors: Erik Lundmark, Anna Krzeminska, Hana Milanov</p>	
<p>#212 - Generosity of start-up incentives and the problem of adverse selection: The case of graduate entrepreneurship policy in China</p> <p>Authors: Jun Li</p>	<p>#157 - Do female entrepreneurs partake in the benefits of the digital economy? Quasi-natural experimental evidence from China</p> <p>Authors: Qiqi Wang, Heng Liu</p>	<p>#120 - Seasonal Food Deprivation Driving Necessity Entrepreneurship: The Role of Risk-Taking, Time-Discounting, and Microcredit</p> <p>Authors: Abu Zafar Shahriar, Dean Shepherd</p>	<p>#48 The Impact of Entrepreneurial Identity (EI) on Opportunity Evaluation (OE) and Opportunity Development (OD)</p> <p>Authors: Omar Almasri, Jenny Gibb, Albert Sunyer</p>	